

QUALITY LIVESTOCK PRODUCTS SINCE 1996

OÑATE FEED MILL

8000 BROADWAY SE

ALBUQUERQUE, NM 87105

505-877-0410

SHOW BEEF START-N-GROW

A TEXTURIZED COMPLETE FEED FOR GROWING
BEEF STEERS AND HEIFERS

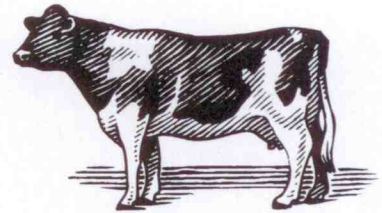
GUARANTEED ANALYSIS

CRUDE PROTEIN (MIN)	14.00%
CRUDE FAT (MIN)	3.00%
CRUDE FIBER (MAX)	18.00%
CALCIUM (MIN)	0.40%
CALCIUM (MAX)	1.00%
PHOSPHORUS (MIN)	0.30%
SALT	(NONE ADDED)
POTASSIUM (MIN)	1.00%
SELENIUM (MIN)	0.30 PPM
VITAMIN A (MIN)	5,000 IU/LB

INGREDIENTS

ROLLED CORN, COTTONSEED HULLS, COTTONSEED MEAL, SOYBEAN MEAL, CORN GERM, SUNCURED ALFALFA HAY, CANE MOLASSES, SOYBEAN OIL, CALCIUM CARBONATE, MONOCALCIUM PHOSPHATE, DRIED WHEY, LINSEED MEAL, BREWERS DRIED YEAST, IRON OXIDE, DRIED MOLASSES, ANIMAL FAT (PRESERVED WITH BHT), ZINC OXIDE, VITAMIN E SUPPLEMENT, COPPER SULFATE, MANGANESE OXIDE, ANISE OIL, VITAMIN A SUPPLEMENT, POTASSIUM SULFATE, MAGNESIUM SULFATE, VITAMIN D SUPPLEMENT, SODIUM SELENITE, FENUGREEK SEED, BIOTIN, CHOLINE CHLORIDE, VITAMIN B12 SUPPLEMENT, ETHYLENEDIAMINE DIHYDRIDIDE, SULFUR, FERROUS CARBONATE, FERROUS SULFATE, COBALT CARBONATE, RIBOFLAVIN SUPPLEMENT,

FEEDING DIRECTIONS: AS A STARTER RATION FOR WEANED CATTLE OVER 300 LBS BODY WEIGHT, FEED THIS PRODUCT AT THE RATE OF 1.5 TO 2.0% BODY WEIGHT ALONG WITH A FREE CHOICE ROUGHAGE SOURCE. GRADUALLY INCREASE THE FEEDING RATE OF THIS PRODUCT OVER A 2 WEEK PERIOD UNTIL CATTLE ARE ON FULL-FEED. AS A GROWING RATION CONTINUE TO FEED AS THE SOLE RATION OR ALONG WITH A QUALITY ROUGHAGE SOURCE TO OBTAIN THE DESIRED AVERAGE DAILY GAIN AND BODY CONDITION. GRADUALLY TRANSITION CATTLE TO OÑATE SHOW BEEF FINISHER AT THE END OF THE GROWING PERIOD. PROVIDE OÑATE 1-1 OR 2-1 MINERAL FREE-CHOICE AT ALL TIMES. PROVIDE PLENTY OF FRESH, CLEAN WATER FREE CHOICE AT ALL TIMES.



OÑATE CATTLE FEED

- SHOW BEEF START-N-GROW COMPLETE FEED-TEXTURIZED
- SHOW BEEF FINISHER COMPLETE FEED-TEXTURIZED
- 18% CALF FEED TEXTURIZED GRAIN MIX
- 14% CALF WEANER PELLETTED COMPLETE FEED
- 20% PROTEIN (3/4 OR 3/8)
- 32% PROTEIN (3/4)
- 20% COW/CALF BLOCK (33#)
- 27% ALL-NATURAL BLOCK (33#)
- 37% RANGE BLOCK (33#)
- COOKED MOLASSES TUBS (200#)
- ALFALFA PELLETS
- 3-WAY SWEET OR DRY GRAIN MIX
- 4-WAY SWEET GRAIN MIX
- 12% ALL PURPOSE GRAIN MIX
- SALT (LOOSE OR BLOCKS)